



EMC
FOUNDATION

NATURE HUNT: EXPLORING GUYANA

WORD SEARCH

A	R	P	E	N	C	I	L	C	A	S	E
T	E	A	C	H	E	R	J	L	I	S	O
E	D	U	F	I	B	K	U	A	L	T	U
S	S	C	H	O	O	L	H	S	L	U	C
T	A	C	U	Y	O	A	Z	S	E	D	D
R	S	D	E	S	K	B	G	R	S	E	F
B	A	C	K	P	A	C	K	O	S	N	E
G	V	H	W	E	Q	Z	P	O	O	T	A
L	I	B	R	A	R	Y	U	M	N	T	R



The EMC Foundation was established in 2022 by Mr. Shyam Nokta to support environmental awareness and education in Guyana, with focus on youths. The drive for this initiative was influenced by the evolution of environmental issues over the last three decades and their importance in today's national and global context.

OUR MISSION

Motivating action through greater environmental awareness and education in Guyana.



Experience

Promote and facilitate activities to encourage a better understanding about the environment.



Connect

Create a network to connect people on environmental issues.



Act

Provide opportunities to experience Guyana's natural environment.

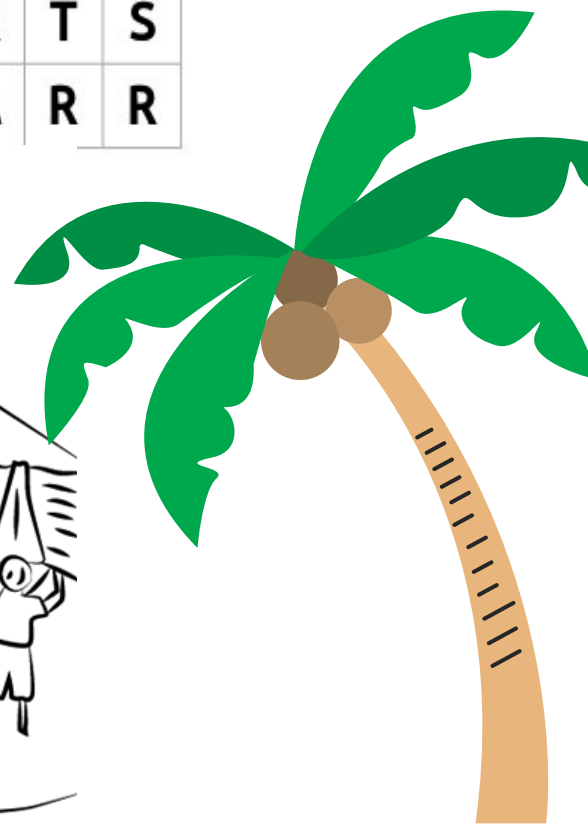


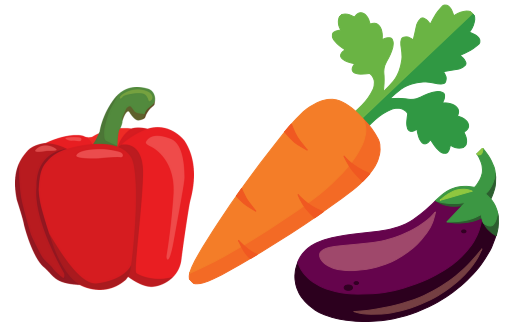
Villages of Guyana



I	T	L	L	U	Z	E	E	B	U	R	G	I	G
M	A	T	T	H	E	W	S	R	I	D	G	E	E
G	B	E	A	T	H	A	R	O	N	O	E	L	L
T	L	U	I	T	V	L	U	G	T	B	R	Y	L
G	B	B	U	L	O	T	I	R	I	T	B	R	I
T	I	N	E	S	B	P	R	E	U	U	S	K	V
U	O	E	T	L	E	T	W	I	N	I	B	I	T
G	N	E	I	I	L	T	A	L	U	M	R	A	R
I	R	E	T	O	P	A	A	B	T	M	O	E	A
B	E	L	F	I	E	L	D	E	O	I	P	R	W
T	Y	T	I	R	A	H	C	R	E	L	B	H	E
L	N	A	N	G	I	S	U	L	U	O	E	V	T
U	I	T	U	N	I	A	L	G	C	M	R	T	S
R	E	H	G	N	A	R	A	M	A	K	A	R	R

- APOTERI
- UITVLUGT
- BELFIELD
- LEONORA
- LUSIGNAN
- BELLADRUM
- MATTHEW'S RIDGE
- STEWARTVILLE
- ENMORE
- TRIUMPH
- ITUNI
- ZEEBURG
- CHARITY
- ALBION
- KAMARANG





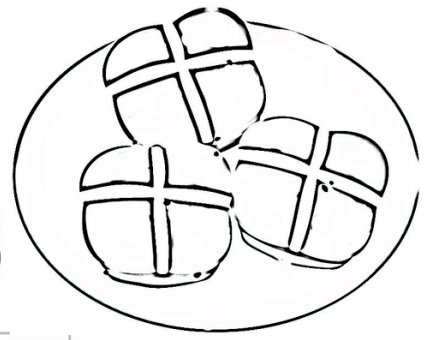
Vegetables of Guyana

B	C	M	T	B	R	N	B	R	P	P	U	A	N
O	B	R	O	C	C	O	L	I	O	D	I	I	O
A	O	S	A	G	E	E	R	N	T	C	K	Y	K
C	G	C	A	S	S	A	V	A	A	O	E	A	A
O	L	A	E	S	C	G	O	O	T	C	B	M	L
E	N	A	R	O	A	R	A	I	O	E	E	O	E
C	O	I	O	L	T	R	M	I	S	L	D	I	E
A	T	A	O	O	I	G	I	N	G	E	R	D	R
L	N	A	B	N	C	C	C	A	A	L	L	A	O
L	C	C	A	R	R	O	T	S	R	B	O	A	O
A	L	E	T	T	U	C	E	L	A	W	C	A	O
L	S	S	E	R	C	R	E	T	A	W	N	G	G
O	O	L	R	E	W	O	L	F	I	L	U	A	C
O	C	A	B	B	A	G	E	B	C	A	C	R	E

- CAULIFLOWER
- GARLIC
- EDDO
- BROCCOLI
- LETTUCE
- POTATO
- CARROTS
- GINGER
- CABBAGE
- KALE
- YAM
- CASSAVA
- WATERCRESS
- CALLALOO
- ONION



Traditional Guyanese Foods

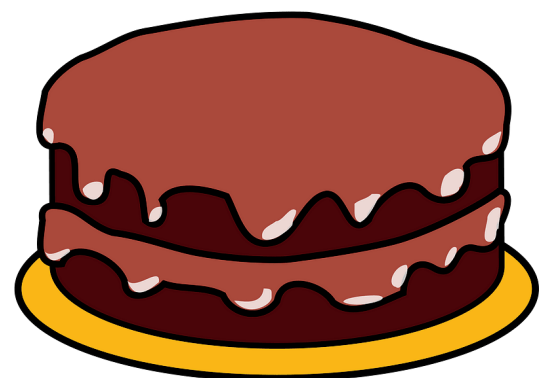


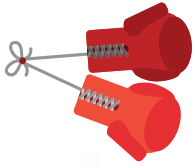
C	P	S	H	S	O	I	L	R	O	T	I	T	O
O	E	A	A	T	T	F	A	E	O	B	V	E	D
E	P	L	S	O	E	O	L	C	L	N	E	C	A
A	P	A	N	E	N	I	R	A	F	A	N	H	E
S	E	R	U	N	R	O	R	S	C	M	I	I	R
K	R	A	B	D	A	E	R	S	T	U	P	C	B
E	P	A	T	M	H	K	I	A	A	T	H	K	A
C	O	S	U	H	R	A	I	V	U	I	O	E	V
O	T	I	N	E	P	C	L	A	A	V	L	N	A
O	N	S	O	D	E	H	A	P	Y	Y	O	C	S
K	P	E	C	N	R	S	I	O	U	O	U	U	S
U	N	P	O	A	E	I	R	N	I	R	R	R	A
P	O	V	C	E	G	F	E	E	I	S	I	R	C
L	O	E	M	E	T	E	M	G	E	E	E	Y	A

- SALARA
- COCONUT BUNS
- DHAL-PURI
- CHICKEN CURRY
- FARINE
- TUMA
- METEMGEE
- PEPPER-POT
- COOK-UP
- CASSAVA BREAD
- CASSAVA PONE
- OIL-ROTI
- FISHCAKE
- PHOLOURIE

Chicken Curry

Traditional Indian Dish



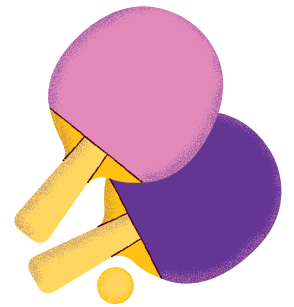


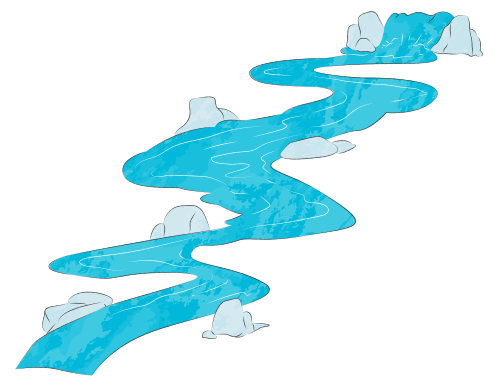
Sports in Guyana



R	G	N	I	M	M	I	W	S	N	A	L	G	S
R	O	C	S	B	A	D	M	I	N	T	O	N	R
L	U	E	R	P	N	E	G	S	S	G	O	L	F
B	T	G	X	I	R	E	G	N	I	L	C	Y	C
A	I	P	B	X	C	I	I	Y	D	C	E	H	W
S	X	E	H	Y	I	K	N	D	B	O	G	L	N
K	G	I	L	W	W	H	E	T	O	I	D	F	C
E	O	L	B	N	X	O	T	T	X	I	T	O	N
T	A	B	L	E	T	E	N	N	I	S	H	O	P
B	N	L	A	W	N	T	E	N	N	I	S	T	T
A	N	H	C	X	S	U	S	M	G	U	T	B	T
L	F	I	E	L	D	H	O	C	K	E	Y	A	A
L	L	S	I	S	Q	U	A	S	H	B	I	L	B
T	L	O	S	V	O	L	L	E	Y	B	A	L	L

- TABLE TENNIS
- FIELD HOCKEY
- GOLF
- CRICKET
- LAWN TENNIS
- BADMINTON
- RUGBY
- VOLLEYBALL
- SQUASH
- SPRINT
- BOXING
- SWIMMING
- CYCLING
- BASKETBALL
- FOOTBALL





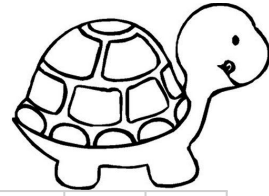
Rivers of Guyana

E	S	S	E	Q	U	I	B	O	M	R	I	M	O
A	K	M	A	I	U	E	I	U	A	O	P	N	W
C	H	A	I	S	O	A	R	T	H	R	I	M	H
I	A	H	M	O	R	U	K	A	A	H	A	A	A
H	W	A	I	O	M	Y	I	K	I	I	U	M	R
K	U	I	I	A	O	E	S	A	C	N	P	A	A
T	P	C	O	N	A	J	C	T	A	U	A	Z	R
I	A	O	R	I	I	N	O	E	W	Y	T	A	E
T	A	N	A	S	I	A	C	A	N	U	R	R	M
E	E	Y	T	B	W	C	W	R	A	C	A	U	E
I	O	A	O	P	O	M	E	R	O	O	N	N	D
M	A	A	P	B	E	R	B	I	C	E	P	I	I
I	S	I	B	I	R	U	K	I	A	I	P	E	I
E	U	K	R	E	W	A	P	I	W	A	E	N	Z

- TAKATU
- IKURIBISI
- MAHAICONY
- WAINI
- CUYUNI
- DEMERARA
- MAHAICA
- MORUKA
- POTARO
- BERBICE
- CANJE
- REWA
- MAZARUNI
- ESSEQUIBO
- POMEROON

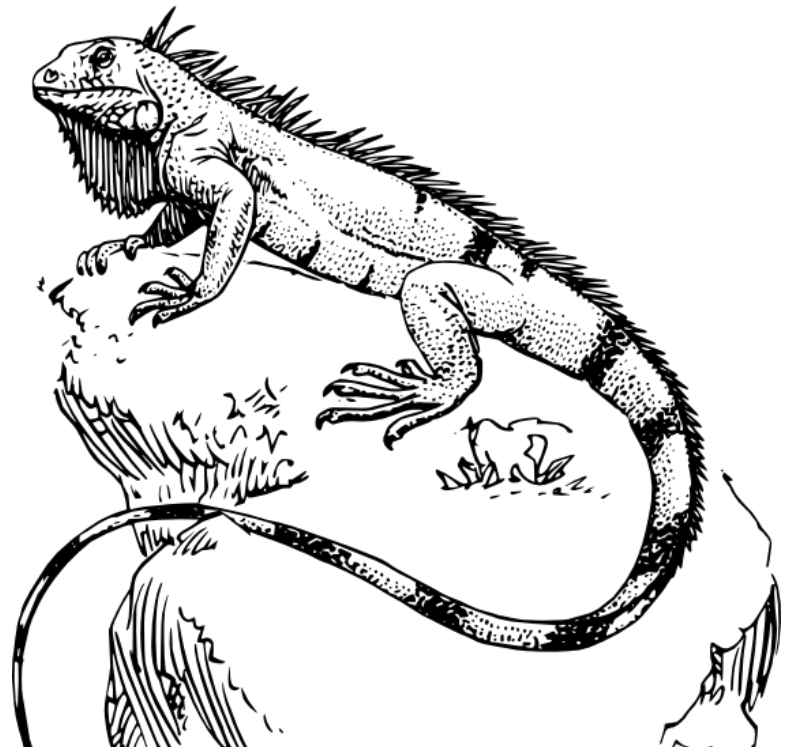


Reptiles of Guyana



B	U	S	H	M	A	S	T	E	R	S	F	G	P
O	A	S	A	L	A	M	A	N	D	E	R	C	A
A	N	O	L	E	A	N	A	C	O	N	D	A	R
J	K	N	D	F	N	A	E	F	T	G	D	I	R
F	E	F	H	U	I	G	U	A	N	A	Y	M	O
A	G	J	U	H	L	I	Z	A	R	D	D	A	T
S	G	J	K	Y	I	S	F	G	H	D	G	N	S
H	J	R	D	D	U	H	Y	G	S	L	R	U	N
A	M	P	H	I	S	B	A	E	N	A	H	I	A
D	G	J	E	T	H	X	T	C	S	B	J	W	K
G	O	L	D	T	E	G	U	K	A	A	T	J	E
A	G	N	K	D	E	T	S	O	Y	R	E	Y	U
E	G	H	J	E	W	A	R	I	R	I	S	G	I
S	E	A	T	U	R	T	L	E	D	A	G	Y	A

- BUSHMASTER
- LABARIA
- GECKO
- IGUANA
- CAIMAN
- LIZARD
- PARROT SNAKE
- ANACONDA
- AMPHISBAENA
- SEATURTLE
- BOA
- ANOLE
- SALAMANDER
- GOLD TEGU
- ANILIUS



Regions and Towns of Guyana

I	C	H	A	E	H	B	N	G	M	N	R	G	B
C	U	E	V	R	H	A	S	E	S	R	N	E	N
M	Y	C	E	I	W	W	H	O	I	M	L	O	A
A	U	O	N	E	T	T	A	A	E	A	N	R	N
D	N	R	G	O	E	R	W	I	A	B	E	G	N
R	I	R	E	L	R	A	A	A	R	A	D	E	A
E	M	I	O	B	E	T	E	R	A	R	N	T	R
T	A	V	O	S	I	N	H	I	U	U	I	O	E
S	Z	E	O	E	E	M	L	W	E	M	L	W	G
M	A	R	T	E	M	H	A	E	E	A	I	N	I
A	R	T	A	U	N	E	A	H	E	S	N	I	N
W	U	O	E	L	W	W	A	L	D	A	T	R	A
E	N	N	B	E	A	E	O	L	L	I	R	I	N
N	I	I	N	I	A	W	A	M	I	R	A	B	M

ROSE-HALL
 LETHEM
 MABARUMA
 NEW AMSTERDAM
 NORTHWEST
 ANNA-REGINA
 CUYUNI-MAZARUNI
 GEORGETOWN
 BARIMA-WAINI
 CORRIVERTON
 MAHDIA
 LINDEN



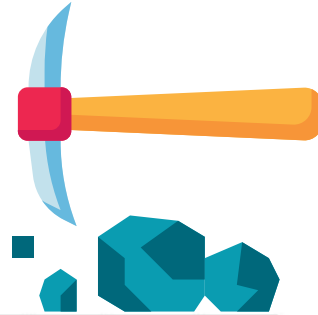
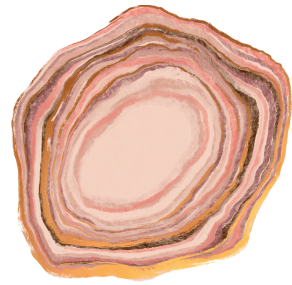
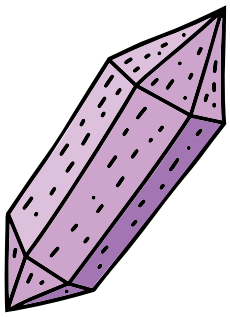
Monuments of Guyana

E	L	A	R	E	V	O	K	Y	K	T	R	O	F
N	A	A	Y	S	N	N	N	N	A	C	K	A	T
M	A	S	N	Y	T	T	E	N	N	U	R	S	O
O	O	T	L	O	A	G	O	R	A	F	I	D	E
R	W	A	I	L	N	M	E	S	N	K	D	S	A
E	C	O	S	O	A	A	S	O	A	O	U	A	N
M	E	U	L	D	N	A	L	O	R	O	K	Y	A
A	T	S	O	H	N	A	E	I	H	G	O	O	Y
R	O	T	U	T	C	I	L	E	G	O	E	A	A
T	S	D	R	O	F	T	T	U	N	N	R	S	N
Y	G	O	R	O	H	A	I	O	N	S	E	U	A
R	F	L	K	A	T	D	O	R	A	I	A	D	M
S	I	I	T	S	K	T	E	T	C	A	T	A	U
I	I	V	E	A	N	N	S	R	L	O	M	Y	O

- FORT NASSAU
- ENMORE MARTYRS
- ST. GEORGES
- KOFI
- UMANA YANA
- RED HOUSE
- NATIONAL UNITY
- FORT KYK-OVER-AL
- CRITCHLOW
- DAMON
- NON-ALIGNED
- STATE HOUSE

ST GEORGES CATHEDRAL

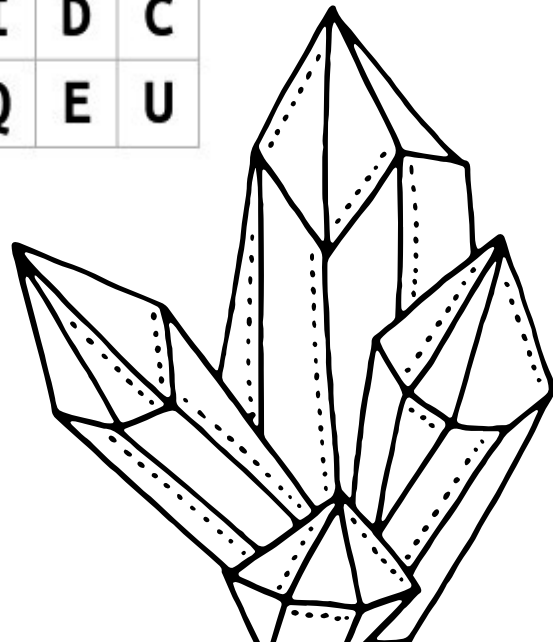
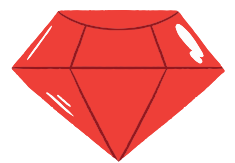


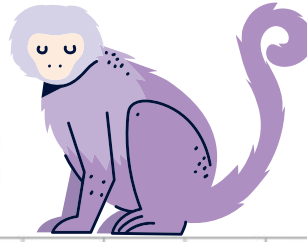
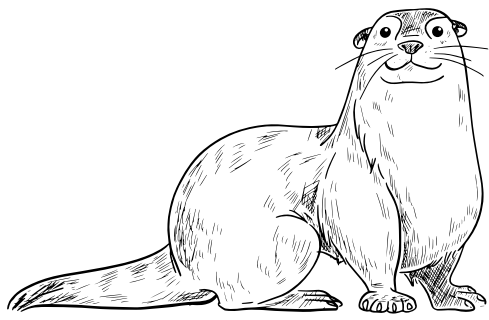


Minerals of Guyana

R	M	Z	E	Y	O	A	E	A	U	Y	A	R	C
D	P	T	N	M	E	L	A	I	G	M	R	M	O
N	A	R	D	D	M	D	A	D	O	A	Y	A	P
N	M	A	O	V	E	R	E	C	D	N	T	O	P
A	A	U	Y	Y	R	S	D	S	I	G	H	E	E
M	N	Q	I	D	A	S	N	A	T	M	R	O	R
E	G	E	I	H	L	I	O	I	G	I	R	O	N
T	A	A	E	A	D	L	M	O	Y	E	O	L	M
H	N	T	I	N	S	V	A	I	R	S	T	T	I
Y	E	R	L	B	S	E	I	T	G	P	E	P	M
S	S	A	D	A	R	R	D	R	M	O	M	O	R
T	E	E	L	B	A	U	X	I	T	E	L	Z	X
T	M	Y	Y	Y	M	M	R	U	B	Y	I	D	C
Y	S	R	C	H	R	O	M	I	T	E	Q	E	U

- SILVER
- EMERALDS
- MICA
- BAUXITE
- TIN
- IRON
- GOLD
- QUARTZ
- DIAMOND
- RUBY
- AGATE
- CHROMITE
- AMETHYST
- MANGANESE
- COPPER

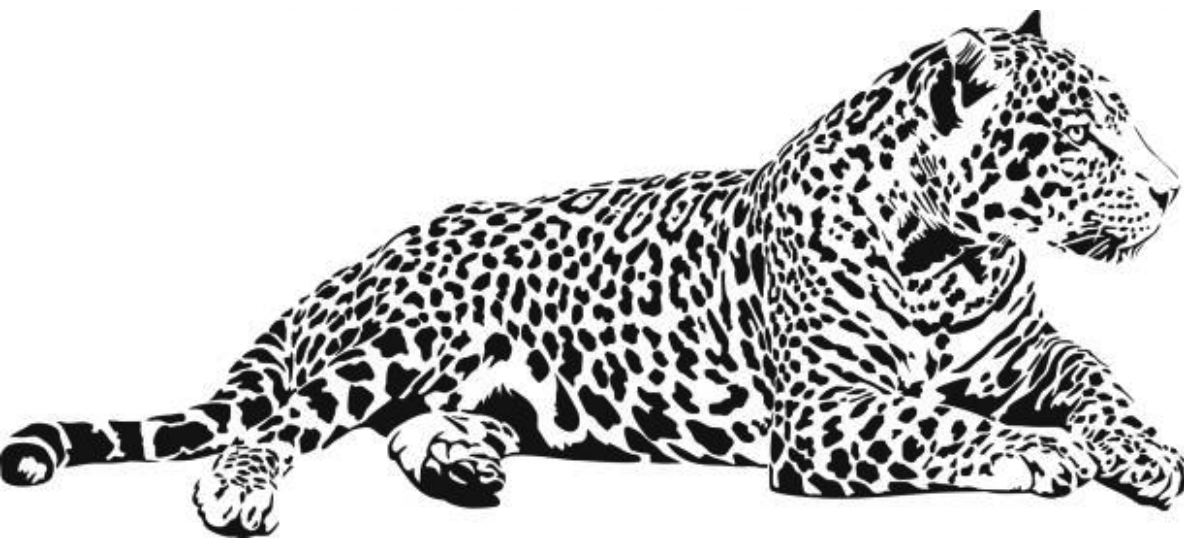




Mammals of Guyana

N	O	O	G	R	A	M	A	J	C	N	C	C	D
M	C	P	F	O	E	S	U	A	N	P	I	E	A
C	E	O	E	E	T	P	D	E	E	R	T	C	R
G	L	S	I	Y	E	K	N	O	M	A	E	K	E
T	O	S	T	U	E	A	O	R	B	X	A	T	O
A	T	U	M	R	B	E	M	I	O	A	E	O	O
A	E	M	O	T	C	A	O	F	E	T	L	R	S
O	F	T	A	P	I	R	A	Y	E	L	E	J	L
D	L	B	O	T	S	G	P	M	I	T	E	A	O
O	O	F	D	S	O	A	O	D	T	U	T	G	T
N	E	A	P	U	C	M	A	O	P	A	A	U	H
K	O	E	T	A	T	M	K	G	O	D	N	A	T
E	L	I	P	O	R	A	R	E	D	M	A	R	T
Y	X	M	A	A	F	E	I	H	J	O	M	T	A

- OTTER
- DEER
- AGOUTI
- MANATEE
- PACA
- SLOTH
- OPOSSUM
- MONKEY
- FOX
- TAPIR
- DONKEY
- ARMADILLO
- BAT
- JAGUAR
- OCELOT

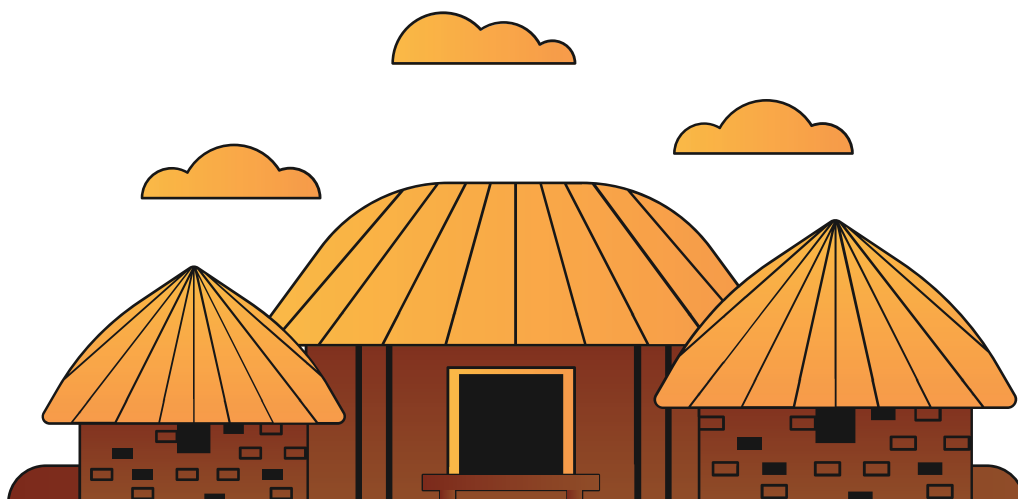


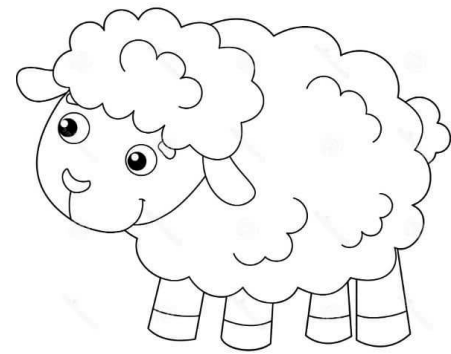


Indigenous Villages of Guyana

W	L	A	S	A	H	P	A	U	A	I	P	I	P
E	A	A	S	W	A	I	U	A	W	P	N	A	E
L	I	U	A	C	A	H	L	P	R	P	E	L	I
L	E	R	X	A	U	M	S	A	C	A	H	A	R
N	O	E	A	A	S	K	A	K	A	N	S	P	A
W	L	N	C	L	A	A	T	R	N	N	A	L	K
O	O	E	A	A	W	E	R	K	U	K	N	A	U
W	T	S	L	R	H	A	A	A	L	S	A	T	P
E	C	S	L	H	A	K	U	W	A	U	K	A	U
T	A	I	I	I	A	N	N	A	A	A	K	S	Y
T	P	I	W	A	K	A	P	A	U	I	S	U	I
A	O	A	L	L	A	E	R	O	N	A	H	W	A
I	E	N	K	A	A	I	S	H	A	L	T	O	N
A	Y	A	R	K	A	S	U	E	L	A	A	A	E

- KANASHEN
- ANNAI
- SAXACALLI
- YUPUKARI
- SURAMA
- HIAWA
- WOWETTA
- REWA
- CAPOEY
- NAPPI
- KASUELA
- AISHALTON
- WAKAPAU
- OREALLA
- ISSENERU

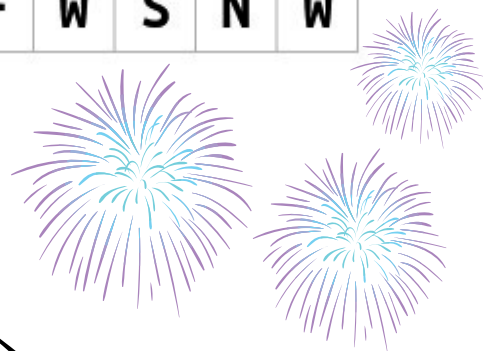
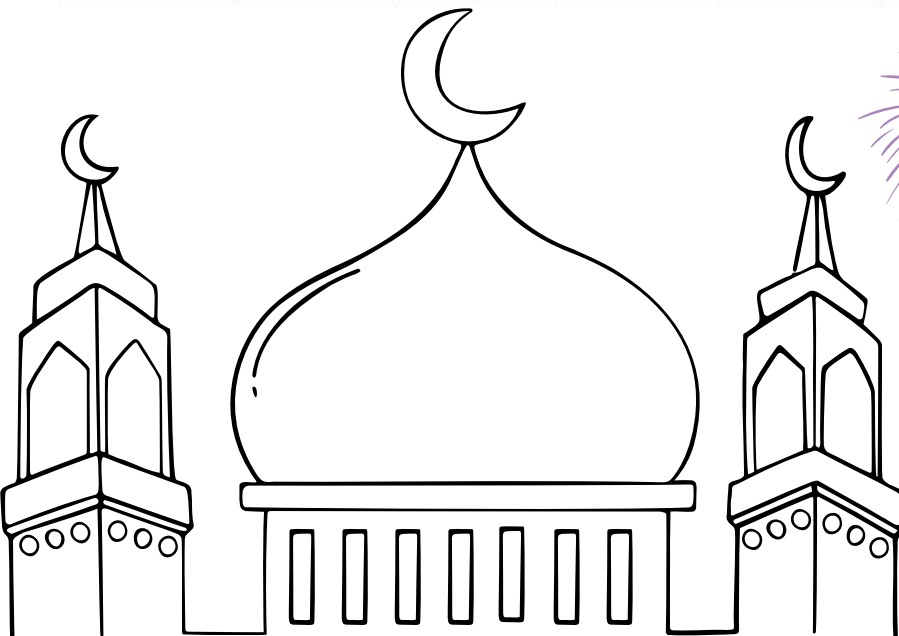




A Guyanese Eid-Ul- Adha

E	C	A	E	P	C	D	G	P	P	E	W	D	E
F	R	I	E	N	D	O	F	G	O	D	O	U	S
E	C	P	D	R	S	M	I	H	A	R	B	I	S
P	C	I	M	C	E	B	E	L	G	S	S	O	N
M	W	H	U	S	T	A	S	N	N	S	E	D	S
T	I	S	S	C	L	K	I	S	A	E	S	E	H
A	H	R	L	F	F	R	P	S	I	N	W	D	E
W	R	O	I	L	A	I	C	I	I	G	I	I	E
F	I	W	M	H	S	D	N	A	O	N	G	H	P
I	R	W	S	T	I	D	N	A	I	I	D	O	I
I	S	A	C	R	I	F	I	C	E	L	M	E	E
P	R	O	P	H	E	T	A	P	W	L	A	I	C
C	O	M	M	I	T	M	E	N	T	I	M	B	O
E	S	N	H	A	O	N	D	R	F	W	S	N	W

- BAKRID
- COW
- WORSHIP
- MUSLIM
- SON
- SHARING
- WILLINGNESS
- COMMITMENT
- PEACE
- IBRAHIM
- FRIEND OF GOD
- SHEEP
- SACRIFICE
- PROPHET





A Guyanese Diwali

F	Y	R	F	I	R	E	W	O	R	K	S	I	L
L	O	C	E	R	P	O	A	T	M	A	T	L	F
S	O	O	D	D	A	L	T	I	S	A	S	O	E
A	P	R	A	Y	R	O	T	P	A	A	T	G	S
A	E	D	F	L	B	A	H	E	O	D	F	N	T
C	E	I	W	E	R	L	G	A	A	A	T	A	I
E	S	N	A	E	N	D	I	K	E	S	R	R	V
L	R	E	P	A	D	I	L	N	A	R	C	A	A
E	O	D	I	Y	A	C	O	O	R	A	F	F	L
B	L	R	S	T	N	E	S	E	R	P	S	E	R
R	O	I	A	D	R	N	A	E	B	H	R	A	S
A	C	L	C	M	O	T	O	R	C	A	D	E	A
T	E	O	O	A	A	D	F	A	Y	B	N	T	R
E	E	T	A	R	O	C	E	D	A	S	R	A	P

- FESTIVAL
- RANGOLI
- LIGHT
- DIYA
- COLORS
- FAST
- PARSAD
- CELEBRATE
- PRESENTS
- FIREWORKS
- MOTORCADE
- DECORATE
- PRAY
- PERA
- LADDOOS

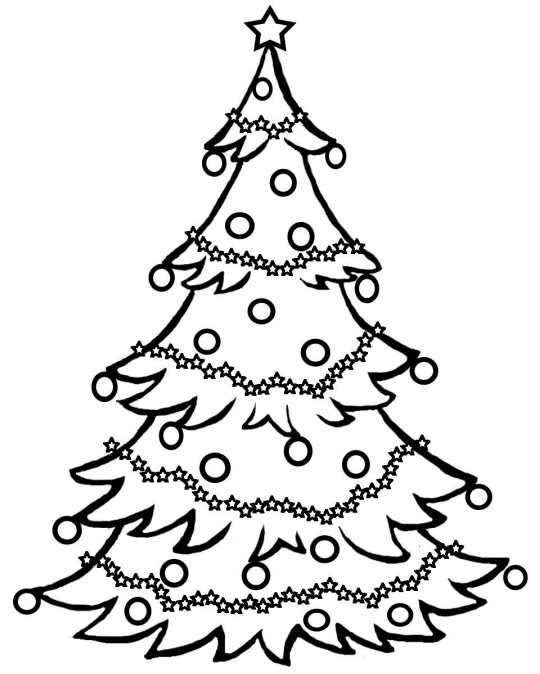


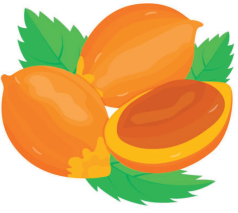


A Guyanese Christmas

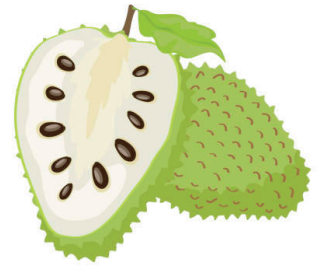
O	E	R	A	T	S	A	G	E	E	R	B	D	P
J	O	Y	O	S	E	R	I	K	S	F	R	S	A
N	P	O	E	T	U	Y	N	A	B	G	D	F	E
B	E	O	G	H	E	R	G	C	Y	T	A	R	R
P	P	G	E	G	T	R	E	K	E	E	E	U	L
A	P	C	R	I	E	E	R	C	I	I	R	I	Y
E	E	A	L	L	R	M	B	A	E	Y	B	T	T
N	R	R	E	Y	T	G	E	L	I	R	R	C	P
C	P	O	R	R	S	G	E	B	K	A	S	A	A
E	O	L	R	I	E	E	R	T	P	T	R	K	A
O	T	F	O	A	R	E	G	I	F	T	L	E	T
G	N	J	S	F	R	E	C	S	F	P	A	C	P
T	N	A	P	A	P	N	B	R	D	E	I	E	R
S	G	N	I	T	E	E	R	G	T	K	R	R	H

- PEPPER POT
- FAIRYLIGHTS
- TREE
- CAROL
- BREAD
- BLACK CAKE
- PARTY
- GREETINGS
- SORREL
- GINGERBEER
- STAR
- FRUITCAKE
- MERRY
- GIFT
- JOY





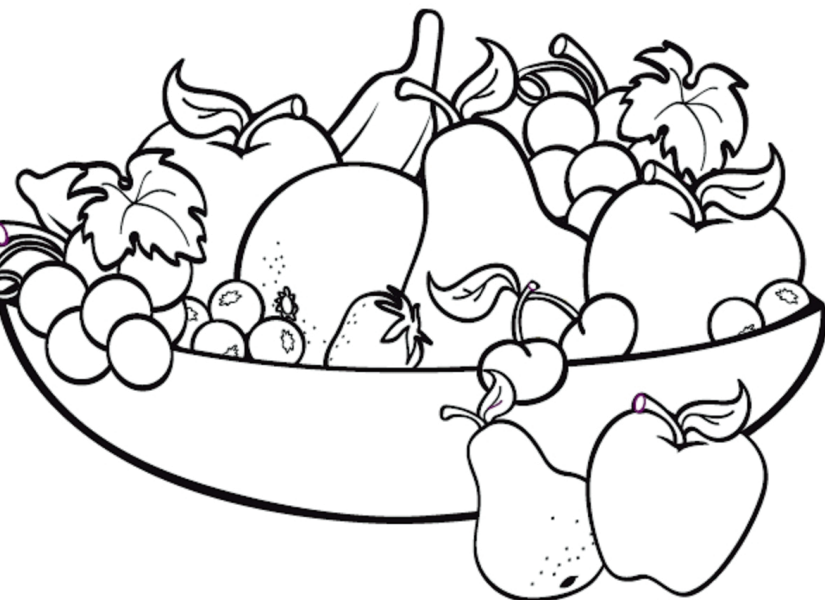
Soursop

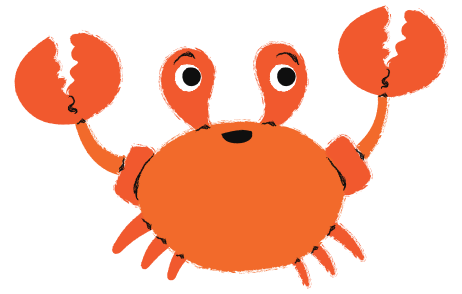


Fruits of Guyana

N	A	A	L	L	I	D	O	P	A	S	M	A	Y
P	I	N	E	A	P	P	L	E	N	A	O	R	R
D	P	Y	A	O	G	E	N	I	P	S	N	G	R
P	I	N	O	P	G	M	A	N	G	O	K	B	E
O	A	O	C	C	W	N	P	O	N	S	E	G	H
A	E	A	O	D	A	C	A	V	A	O	Y	R	C
C	O	T	W	E	A	S	V	E	O	U	A	E	O
P	A	A	N	A	N	A	B	N	C	R	P	G	L
N	W	M	E	E	R	S	P	A	O	S	P	D	N
O	E	A	O	N	P	A	A	S	C	O	L	O	O
N	H	R	A	O	R	A	N	G	E	P	E	A	O
O	S	I	O	C	O	A	V	O	V	K	A	C	M
L	A	N	O	A	E	R	O	G	A	R	E	P	A
O	C	D	N	P	N	C	P	B	A	O	O	A	J

- TAMARIND
- CASHEW
- AVACADO
- PINEAPPLE
- SOURSOP
- BANANA
- AWARA
- JAMOON
- MONKEY APPLE
- MANGO
- SAPODILLA
- CHERRY
- GENIP
- ORANGE
- COCOA

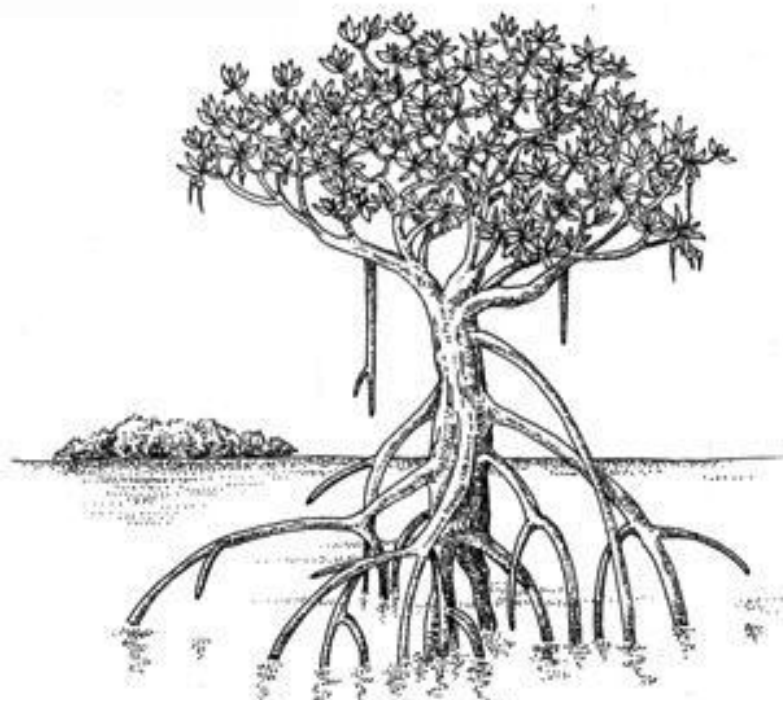
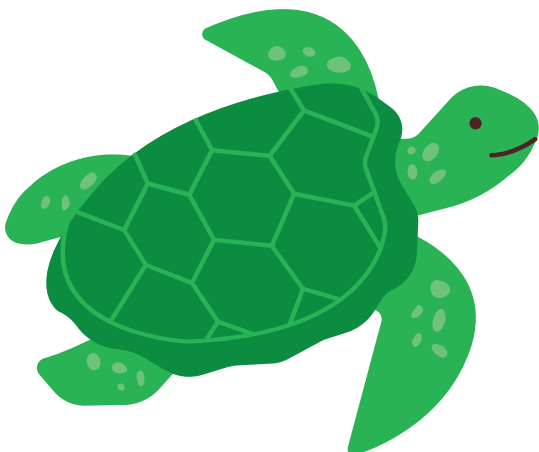




Coastline of Guyana

U	C	E	L	E	A	T	H	E	R	B	A	C	K
E	B	E	A	C	H	T	C	A	E	O	O	C	R
B	B	L	C	E	I	L	R	I	H	W	A	V	E
O	K	D	R	S	A	C	A	E	Y	D	D	U	M
L	R	E	A	C	C	R	E	T	I	O	N	E	L
I	E	N	B	A	G	M	R	E	L	S	R	O	N
V	D	O	B	A	E	M	I	N	B	B	E	I	T
E	R	E	M	E	V	O	R	G	N	A	M	T	T
R	B	C	R	D	E	R	O	S	I	O	N	O	E
I	O	A	A	H	A	W	K	S	B	I	L	L	A
D	R	H	A	R	B	O	R	A	Y	Y	A	O	E
L	E	L	T	R	U	T	N	E	E	R	G	A	E
E	S	L	A	T	S	A	O	C	V	R	I	B	O
Y	S	E	H	A	A	S	E	D	I	T	K	H	N

- SAND
- MANGROVE
- EROSION
- HAWKSBILL
- CRAB
- MUDDY
- OLIVE RIDLEY
- COASTAL
- ACCRETION
- LEATHERBACK
- WAVE
- GREEN TURTLE
- HARBOR
- BEACH
- TIDE

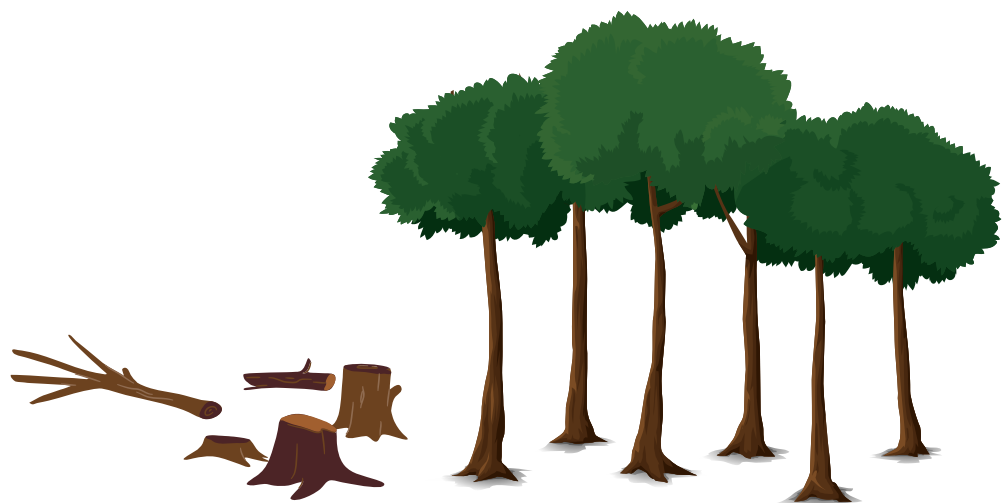
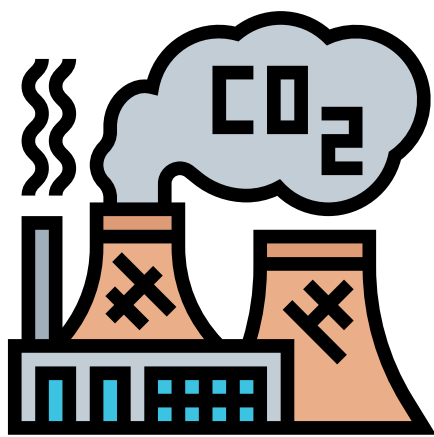




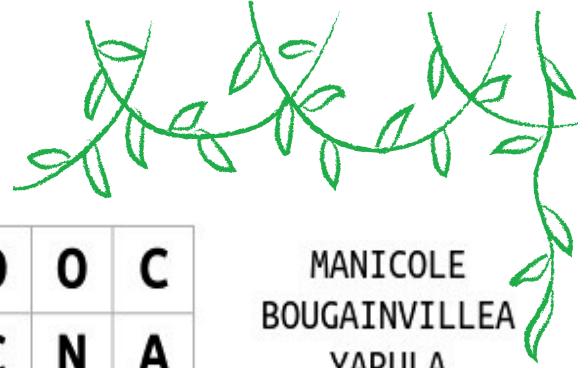
Low Carbon Development Strategy

T	N	N	S	M	R	N	E	N	E	R	G	Y	R
N	I	Y	M	O	N	O	C	E	E	S	A	C	T
D	E	V	E	L	O	P	M	E	N	T	D	O	F
O	O	B	O	T	C	E	O	D	I	I	A	N	R
O	A	E	L	B	A	W	E	N	E	R	P	S	M
D	E	G	R	A	D	A	T	I	O	N	T	E	I
C	A	R	B	O	N	P	S	D	A	G	A	R	T
E	E	P	I	E	R	O	S	I	O	N	T	V	I
E	M	M	I	S	S	I	O	N	D	I	I	A	G
B	A	E	O	A	I	E	N	N	A	B	O	T	A
S	O	E	N	N	A	M	T	E	N	A	N	I	T
S	U	S	T	A	I	N	A	B	L	E	N	O	I
D	E	F	O	R	E	S	T	A	T	I	O	N	O
M	L	R	E	T	A	M	I	L	C	A	O	G	N

- EROSION
- MITIGATION
- ADAPTATION
- DEVELOPMENT
- SUSTAINABLE
- CONSERVATION
- CLIMATE
- RENEWABLE
- ECONOMY
- DEFORESTATION
- ENERGY
- DEGRADATION
- CARBON
- EMISSION

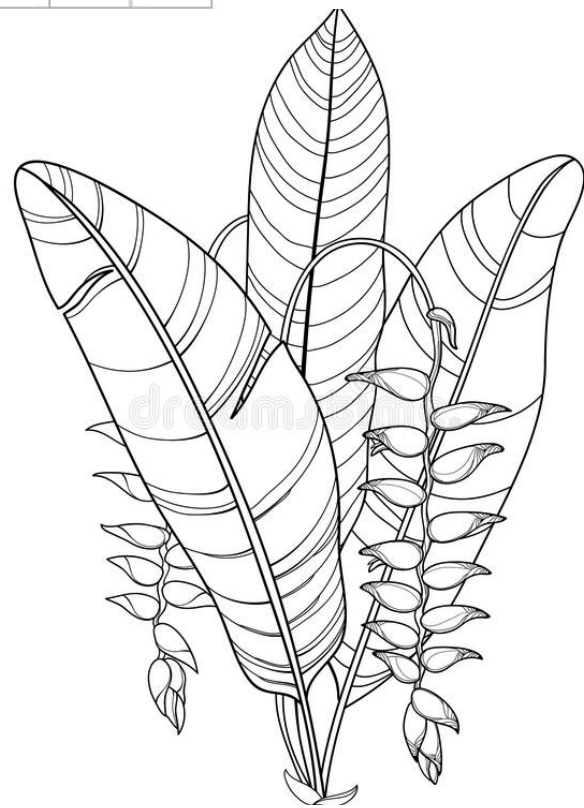


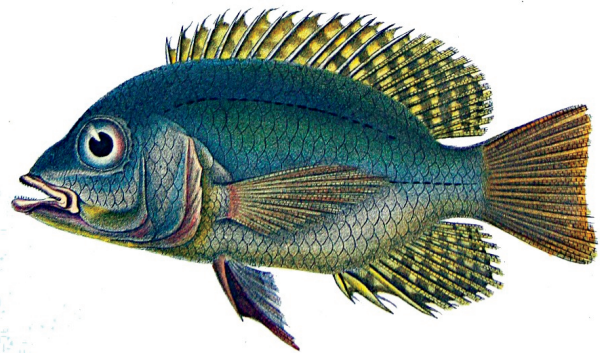
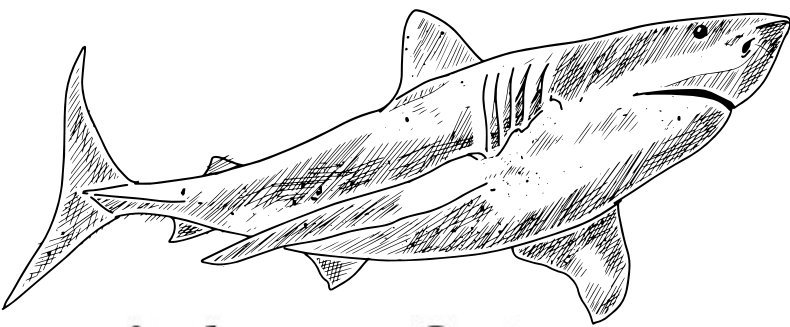
Flora of Guyana



M	W	A	T	E	R	L	I	L	L	Y	O	O	C
E	E	R	T	D	O	O	W	B	A	R	C	N	A
M	L	I	E	R	B	A	R	O	M	A	L	L	I
M	A	N	I	C	O	L	E	E	B	O	A	A	E
H	S	H	E	L	I	C	O	N	I	A	L	W	B
B	I	T	H	G	V	A	B	A	L	L	A	W	A
L	B	B	A	Y	A	R	U	L	A	U	C	E	C
L	C	E	I	N	N	A	A	R	B	R	A	M	A
O	E	C	L	S	A	R	A	L	P	M	I	P	B
D	M	A	Y	T	C	L	L	L	I	H	A	N	R
Y	R	A	T	U	R	U	P	A	L	M	O	A	A
A	D	R	L	B	B	W	S	I	X	O	R	A	L
V	N	L	G	R	E	E	N	H	E	A	R	T	E
B	O	U	G	A	I	N	V	I	L	L	E	A	A

- MANICOLE
- BOUGAINVILLEA
- YARULA
- HIBISCUS
- BAROMALLI
- WALLABA
- CRABWOOD TREE
- TURU PALM
- HELICONIA
- WATER LILLY
- CABRALEA
- PIMPLA
- GREENHEART
- IXORA

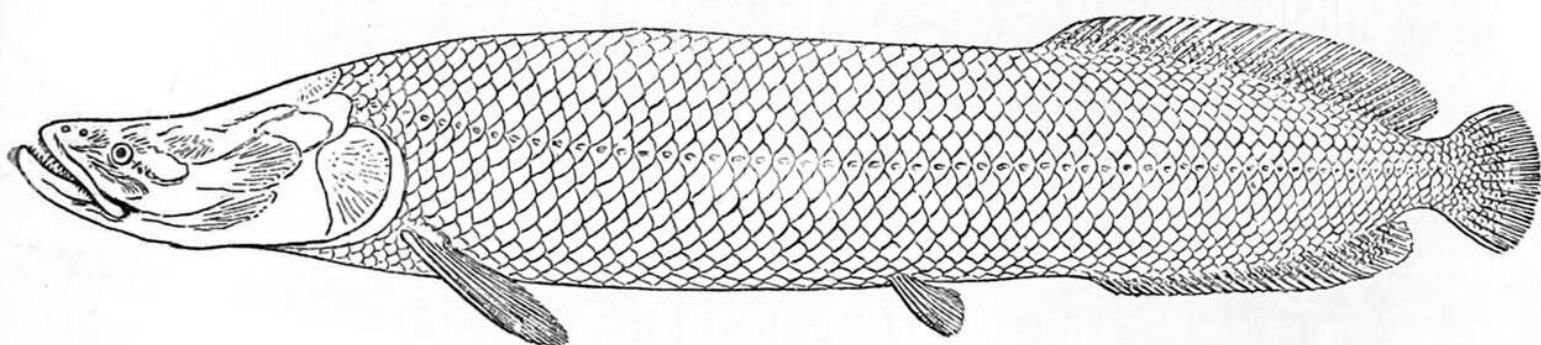




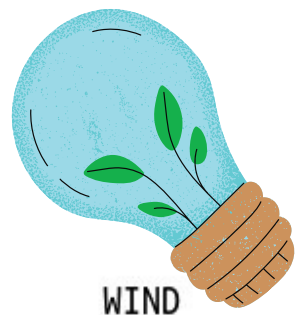
Fishes of Guyana

L	T	S	I	E	A	I	S	L	A	A	S	N	H
R	U	U	U	Y	F	E	W	H	A	P	B	G	L
E	B	S	O	E	P	A	S	S	A	R	I	U	C
K	P	L	A	R	A	P	A	I	M	A	N	C	A
C	Y	A	A	U	T	E	N	F	U	E	A	A	O
A	R	T	N	O	E	U	S	R	A	A	N	T	B
B	A	S	I	F	I	B	U	E	A	I	A	F	A
L	M	M	F	P	A	C	U	T	A	H	K	I	S
L	A	A	T	A	U	A	L	T	E	S	U	S	H
I	G	T	A	Y	B	A	T	U	A	T	L	H	A
G	N	U	A	A	T	H	R	B	T	K	Y	A	W
P	A	T	W	A	A	N	N	A	F	O	L	K	U
S	B	I	I	A	G	B	S	N	A	P	P	E	R
I	B	A	R	A	M	I	A	H	A	A	I	E	G

- BUTTERFISH
- CUIRRASS
- ANNAFOLK
- LUKANANI
- HAIMARA
- PACU
- FOUREYE
- BANGA MARY
- PATWA
- GILLBACKER
- TROUT
- BASHAW
- SNAPPER
- ARAPAIMA
- CATFISH

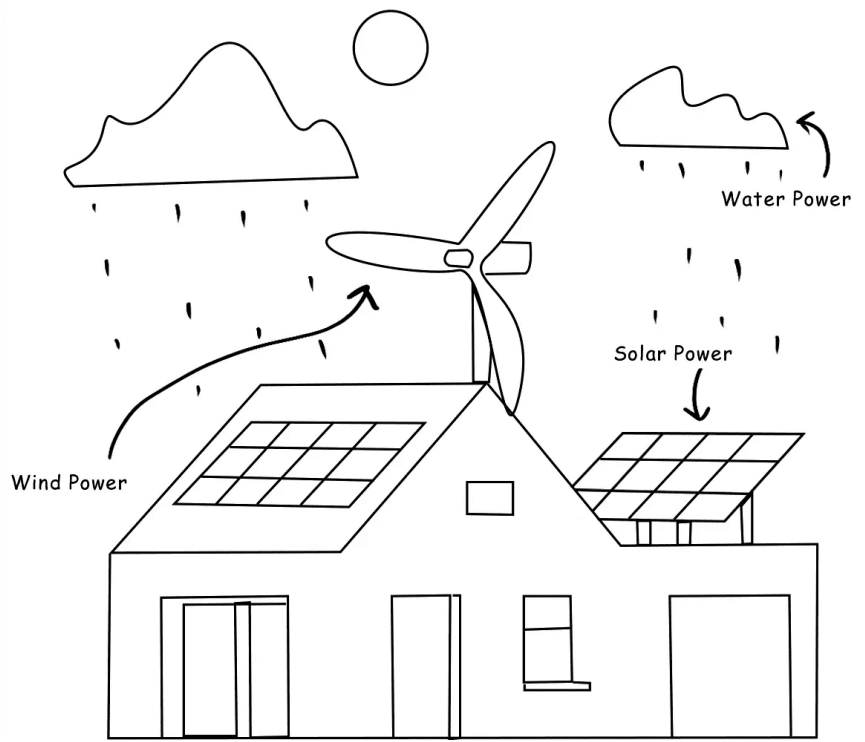


Clean Energy



S	U	S	T	A	I	N	A	B	L	E	E	H	E
R	E	U	S	A	B	L	E	H	R	E	E	Y	L
O	N	R	T	H	I	A	F	T	E	C	L	D	T
I	V	B	A	A	V	I	F	T	N	O	E	R	R
R	I	R	T	L	E	R	I	E	I	H	C	O	E
E	R	R	E	O	O	U	C	C	B	T	T	E	D
D	O	Y	S	C	E	S	I	O	R	E	R	N	C
U	N	P	O	W	E	R	E	N	U	I	I	R	C
C	M	R	E	E	E	E	N	S	T	W	C	E	R
E	E	G	R	E	E	N	T	E	G	M	I	R	O
I	N	U	C	L	E	A	R	R	L	B	T	R	O
V	T	E	N	E	I	C	E	V	T	N	Y	S	R
L	A	L	L	T	R	Y	A	E	E	M	E	N	C
E	E	R	A	E	E	L	B	A	W	E	N	E	R

- WIND
- POWER
- CONSERVE
- SUSTAINABLE
- REDUCE
- TURBINE
- RENEWABLE
- NUCLEAR
- EFFICIENT
- ENVIRONMENT
- REUSABLE
- SOLAR
- ELECTRICITY
- GREEN
- HYDRO



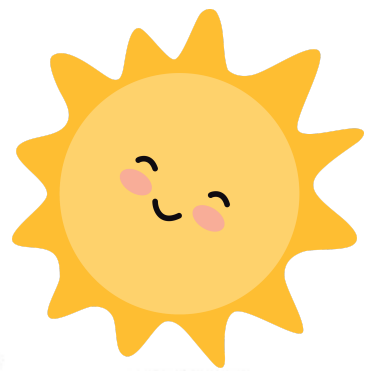
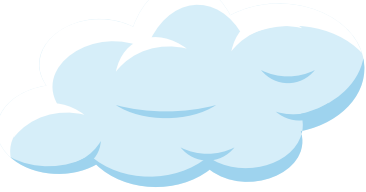
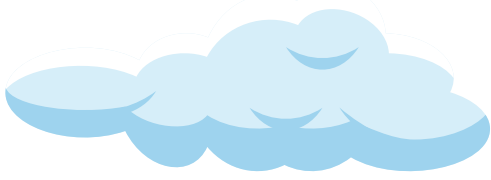
Birds of Guyana



E	D	D	S	O	F	D	A	H	O	S	N	W	C
W	O	E	M	A	C	A	W	A	E	U	O	E	G
N	V	V	A	T	O	U	C	A	N	G	R	A	A
S	E	H	A	W	K	S	S	P	A	R	R	O	W
C	A	N	J	E	P	H	E	A	S	A	N	T	W
O	L	I	J	D	R	W	O	S	S	A	R	U	C
G	W	P	U	F	F	B	I	R	D	D	D	W	P
N	A	Y	P	P	O	F	U	O	N	R	R	B	A
I	A	I	E	V	U	L	T	U	R	E	I	A	I
M	U	B	G	O	G	D	D	V	D	R	B	U	E
A	K	I	N	G	F	I	S	H	E	R	G	M	T
L	A	S	U	U	N	B	J	A	C	A	N	A	A
F	L	R	W	U	B	L	D	P	B	A	I	I	U
E	L	G	A	E	Y	P	R	A	H	Y	K	I	H

- IBIS
- CANJE PHEASANT
- CURASSOW
- KINGBIRD
- VULTURE
- TOUCAN
- SPARROW
- MACAW
- FLAMINGO
- HARPY EAGLE
- KINGFISHER
- DOVE
- HAWK
- PUFFBIRD
- JACANA

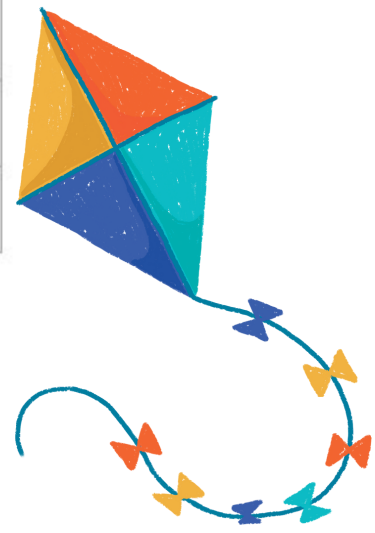




A Guyanese Picnic

M	A	Y	R	W	E	S	N	P	I	K	T	A	H
L	E	A	N	T	P	S	T	W	K	S	U	K	A
O	C	B	M	N	K	A	S	I	A	T	R	I	N
T	S	R	U	A	U	E	M	N	P	N	N	T	A
T	M	N	M	G	T	S	S	D	U	A	A	E	P
E	U	A	B	W	A	A	A	Y	N	R	R	E	K
L	T	R	R	D	N	R	O	C	P	O	P	K	I
N	N	E	E	K	M	S	D	P	O	K	O	P	N
P	A	L	L	A	T	N	T	E	P	L	A	G	O
E	A	O	L	M	T	E	E	O	N	A	A	R	C
B	T	O	A	A	O	N	K	O	N	N	S	A	A
O	S	C	R	T	Y	T	S	Y	O	O	T	S	T
A	S	H	I	R	S	Y	A	N	T	T	T	S	O
C	R	D	K	O	T	S	B	E	P	B	P	D	N

- GARDEN
- UMBRELLA
- KITE
- SUNNY
- PARK
- BASKET
- WINDY
- ANTS
- POPCORN
- HAT
- TOYS
- NAPKIN
- GRASS
- MAT
- COOLER



GLOSSARY OF TERMS

Accretion

The process of coastal sediment returning to the visible portion of a beach or foreshore after being washed away.

Adaptation

The process of changing to suit different conditions

Amphisbaena

Commonly known as worm lizards, they are a group of limbless vertebrates (no arms or legs).

Anole

A green tree-dwelling lizard that is native to the southeastern US. It can change its color to several shades, from brown to green.

Arapaima

South America's largest freshwater fish, native to the Amazon. They can grow up to 6 feet and weigh more than 440 pounds.

Avacado

Commonly called pears in Guyana. Avocado is a bright green fruit with a large pit and dark leathery skin.

Bakrid

A Muslim festival commemorating Abraham's readiness to sacrifice his son to please Allah.

Baromalli

A major species of timber tree in Guyana. Often used to make plyboards.

Cabralea

A species of timber tree in Guyana is frequently used in construction, furniture making, and sculpting.

Climate

The long-term average weather of a region includes typical weather patterns, frequency, and intensity of storms, cold spells, and heat waves.

Curassow

A large pheasant-like bird commonly known as the Powis.

Deforestation

Processes that result in the conversion of forested lands for non-forest uses through burning, decomposition, or removal of trees.

Degradation

The process in which the beauty or quality of something is destroyed or spoiled.

Erosion

The loss or displacement of land, or the long-term removal of sediment and rocks along the coastline due to the action of waves

Emission

The release of substances into the atmosphere.

GLOSSARY OF TERMS

Haimara

A species of freshwater fish found in the rivers of South America.

Jacana

Colorful water birds with long legs and incredibly long toes and claws. Also known as lily-trotters.

Laddoo

A round sweet originating from India.

Lukanani

A species of fish: is also known as the butterfly peacock bass.

Mangrove

Tropical plants which are adapted to loose, wet soils, salt water, and being periodically submerged by tides. They grow in tidal, chiefly tropical, coastal swamps.

Manicole

A tall slender palm found in coastal and low-land regions of South America.

Mitigation

Reducing the risk of loss from the occurrence of any undesirable event.

Paca

A ground-dwelling, herbivorous rodent with dots and stripes on its sides. Commonly referred to as Labba in Guyana.

Rangoli

An art form originating from India in which patterns are created using rice, sand, or other powders.

Renewable

Capable of being replaced by natural ecological cycles e.g. from sources such as water, wind, sun, and biomass.

Sustainable

Fulfilling the needs of current generations without compromising the needs of future generations, while ensuring a balance between economic growth, environmental care, and social well-being.

Tide

The alternate rising and falling of the sea due to the attraction of the moon and sun.



A B O U T T H E

EMC FOUNDATION

The EMC Foundation **was established in 2022** to **support environmental awareness and education in Guyana, focusing on youth**. The brainchild of Mr. Shyam Nokta, the Foundation was established to help address the need for enhanced environmental awareness and education in Guyana. The drive for this initiative is also influenced by the evolution of environmental issues over the last three decades and their importance in today's national and global context.

The Foundation promotes and facilitates activities to encourage a better understanding of the environment; create a network to connect people on environmental issues; and provides opportunities to experience Guyana's natural environment.



@emcfoundationgy

www.emcfoundation.gy